

YEAR

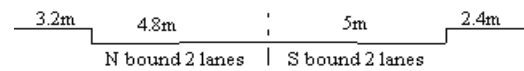
2015

LINK

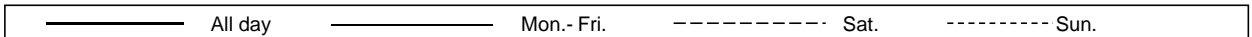
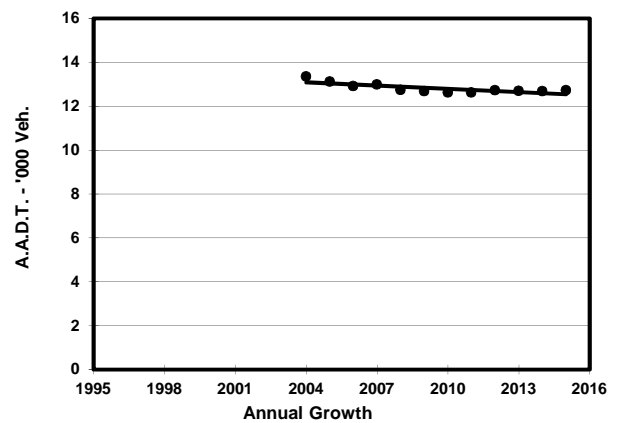
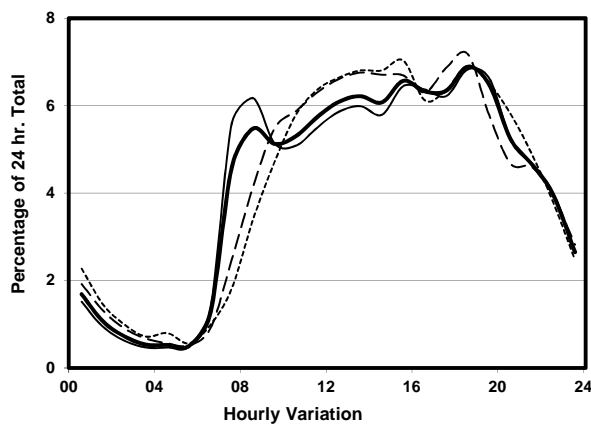
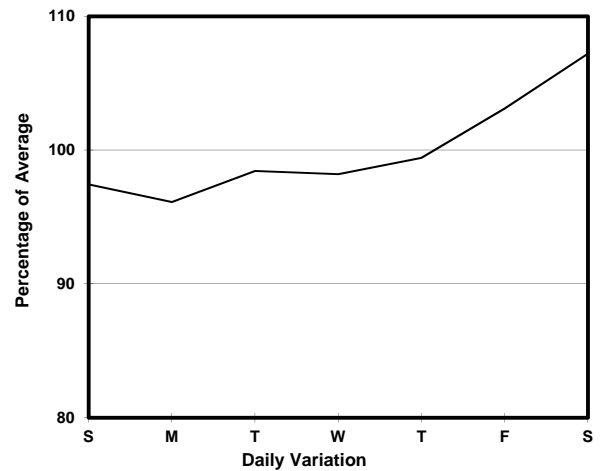
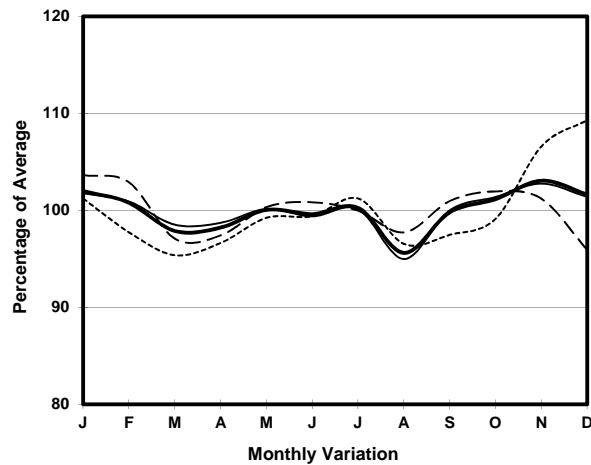
TAT CHEE AVE (from BEGONIA RD to CORNWALL ST)

CORE STATION
ROAD NETWORK
ROAD TYPE

3106
MINOR
LOCAL DISTRIBUTOR



1. TRAFFIC FLOW VARIATION AND GROWTH



2. TRAFFIC CHARACTERISTICS (BY DIRECTION)

Parameter	All - Day	Mon. - Fri.	Sat.	Sun.
SOUTH BOUND				
A.A.D.T.	6900	6790	7540	6880
R 12 / 24 - %	70.7	70.9	71.5	68.8
R 16 / 24 - %	91.1	91.5	90.4	90.2
AM Peak Hour	0800-0900	0800-0900	0900-1000	0900-1000
One-way flow at AM peak hour	360	400	430	330
T - % (AM)	-	-	-	-
PM Peak Hour	1800-1900	1800-1900	1800-1900	1800-1900
One-way flow at PM peak hour	480	470	540	500
T - % (PM)	-	-	-	-
Prop.of commercial vehicles - 16 hr.	-	-	-	-
NORTH BOUND				
A.A.D.T.	5820	5830	6140	5520
R 12 / 24 - %	70.9	71.2	71.3	68.8
R 16 / 24 - %	91.1	91.5	90.4	89.2
AM Peak Hour	0800-0900	0800-0900	0900-1000	0900-1000
One-way flow at AM peak hour	330	380	320	260
T - % (AM)	-	-	-	-
PM Peak Hour	1800-1900	1800-1900	1800-1900	1800-1900
One-way flow at PM peak hour	400	400	440	360
T - % (PM)	-	-	-	-
Prop.of commercial vehicles - 16 hr.	-	-	-	-

3. OTHER INFORMATION AND COMMENT